



# Gunnedah Public School NEWSLETTER



Term 1, Week 9

Thursday, March 27, 2025

## Principal's Message

with Mrs Mac



# WALAAYBAA ROOM OPENING

### Meals on Wheels Volunteers

We are proud to help out Gunnedah Meals on Wheels regularly.

Our SRC students really enjoy their time visiting our local community members and we are told, so do the Meals on Wheels clients!

Friday 21st was the official opening of the Walaaybaa room. It embodies a deeper connection to the surrounding culture and environment. The room is designed to bring students and community members together to forge spiritual and cultural connections in a welcoming environment. This communal space not only nurtures relationships among individuals but also strengthens the bonds within the community, creating a collective spirit that honours the past while inspiring future generations.



## Quality Education in a Caring Environment

Bloomfield Street, Gunnedah, 2380

Phone: (02) 6742 2266

Email: [gunnedah-p.school@det.nsw.edu.au](mailto:gunnedah-p.school@det.nsw.edu.au)

Principal: Mrs Cathie McMaster



# STAGE 1 KNOWLEDGE OF LOCAL HISTORY

On Wednesday 19th March, all Stage 1 students went on the school bus to three significant local sites around town to deepen their knowledge of local history. We learnt of the importance of Mullibar Lagoon to local Aboriginal tribes. It provided food, shelter and weaving material. We imagined how different it looks now compared to when the Red Chief would have been there. Wallaby Trap provided a place to ambush kangaroos and was the site of a battle between the Gunn-e-darr tribe and a tribe from Casillis.

The sandstone sculptures at Pensioners Hill have the Rainbow Serpent running along the back of them which represents energy, fertility and the rich Dreamtime stories of the Kamilaroi people. The students also had some fun on the new play equipment there and learnt that the totem poles each relate to a different Dreamtime story.

Atop the hill, an eagle made from scrap metal, created by Andrew Whitehead, soars proudly. Nearby, hand-carved eagle seats by Dan Birkett further enhance the symbolism. The eagle is closely linked to the Kamilaroi totem "Kaputhin the Eagle," which represents several positive spiritual concepts.



# POP UP RESTAURANT STAGE 1C

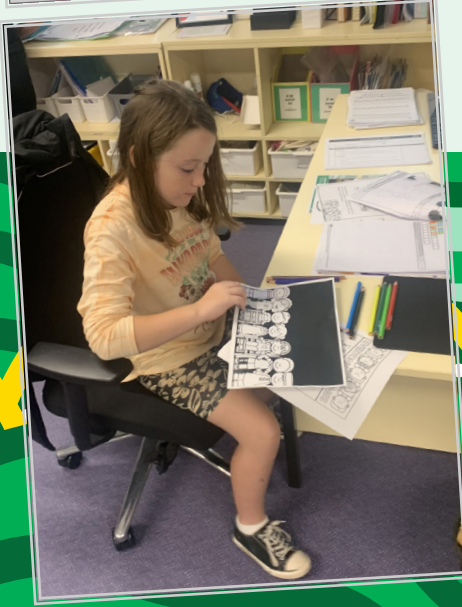
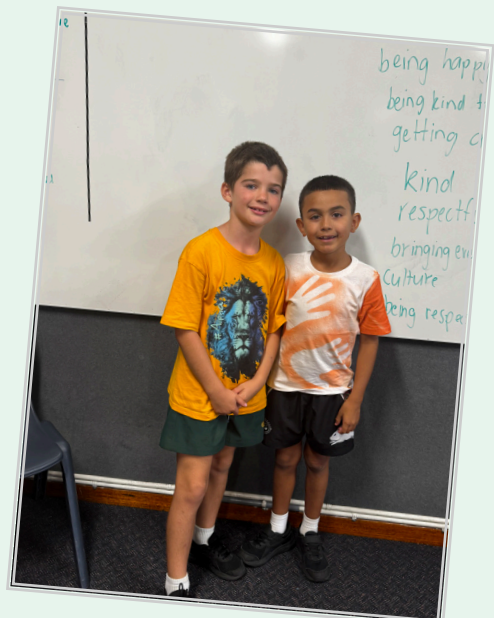
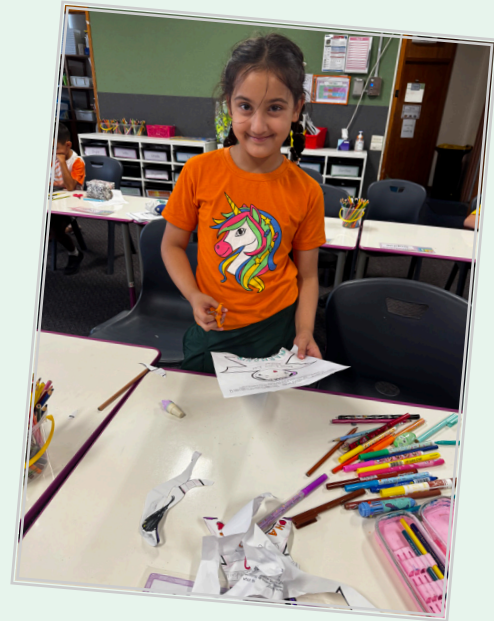
On Thursday 20th March, Stage 1C served our guests tomato & pumpkin pasta for our pop-up restaurant. Students set the tables and prepared the food, using the vegetables from our garden.

" We enjoyed picking the tomatoes and pumpkin from our garden. We loved trying our food and seeing all our guests."

Well done Stage 1C, great job!



# HARMONY DAY





GUNNEDAH PUBLIC SCHOOL

# Annual EGG DROP

THURSDAY 10TH APRIL  
12.00PM  
GUNNEDAH PUBLIC SCHOOL,  
UNDER THE THUNDERDOME

# GPS P&C EASTER RAFFLE

TICKETS \$1 EACH

Drawn at the Easter Hat Parade on Thursday, 10 April

JOIN US FOR OUR

# Easter Hat Parade

APRIL 10, 2025  
10 AM  
GUNNEDAH PUBLIC SCHOOL

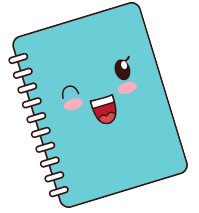
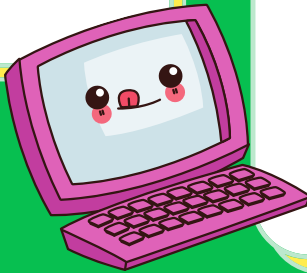


# Kid's Corner



## Five Fun Facts:

- Butterflies taste with their feet.
- Sharks do not have any bones.
- Identical twins don't have the same fingerprints.
- Octopuses have three hearts
- Only female mosquitoes bite



### Q & A:

How many legs does a spider have?

A. 5      B. 7

C. 8.      D. 9

Answer C. 8

## Gunnedah Public School

G	N	I	F	K	L	D	O	F	F	I	C	E	S
N	S	R	L	S	L	F	R	I	E	N	D	S	R
K	S	E	D	E	C	E	E	F	E	R	S	N	E
T	L	C	A	D	A	C	H	H	B	F	C	A	H
L	T	R	E	M	N	C	Y	N	I	C	H	M	C
U	N	T	N	E	E	N	B	A	R	I	O	A	A
S	H	R	I	C	N	E	E	C	B	A	O	T	E
P	E	C	P	A	G	E	C	E	A	K	L	H	T
O	S	A	E	N	L	B	U	S	R	R	C	S	S
R	F	R	N	T	I	E	L	F	C	G	T	I	E
T	L	L	C	E	S	F	U	H	E	E	N	P	S
H	A	A	I	E	H	N	E	A	A	E	N	A	R
O	C	E	L	N	R	C	I	G	R	L	R	C	H
L	N	E	I	O	L	U	N	C	H	A	L	R	U

FRIENDS  
SICKBAY  
PENCIL  
LUNCH  
CANTEEN  
FUN  
LEARN  
HALL  
BUS  
ART  
ENGLISH  
OFFICE  
GREEN  
SCIENCE  
SCHOOL  
SPORT  
MATHS  
TEACHERS  
DESK



# UNIFORM REMINDER

Thanks to our generous Gunnedah Public School P&C, each child is being given a free pair of trackpants. We are very grateful for their generosity and support within our school community.

If you haven't collected your child's trackpants, please come into the office between 8:30-3:15 from Mondays to Fridays, to get your student prepared for the cooler days coming.



## MODEL THE BEHAVIOURS YOU WANT TO SEE

Children learn how to navigate the world by watching those around them - especially their parents. The way you handle emotions, communicate with others, and manage challenges directly influences your child's emotional and social development..

From expressing emotions in healthy ways to handling disagreements with patience, your actions set the foundation for how your child interacts with others.

**Try this:** Next time you're feeling frustrated, verbalise how you're managing it: "I'm feeling a bit stressed, so I'm going to take a deep breath and think about how to solve this." This helps your child learn emotional regulation and problem-solving..



# Gunnedah Public School Calendar

	MONDAY	TUESDAY	WEDNESDAY	THURSDAY	FRIDAY
<b>WEEK 9</b>	24 MARCH Stage 2 swimming (Years 3 & 4)	25 MARCH BOOK CLUB ORDERS DUE	26 MARCH 10am STEPS Vision Screening	27 MARCH	28 MARCH CANTEEN DAY Coal Miners Cup (Yrs 3-6 boys & Yrs 5&6 girls) 2pm Assembly
<b>WEEK 10</b>	31 MARCH	1 APRIL	2 APRIL	3 APRIL WHEELIE SAFE KIDS Bike Ed	4 APRIL CANTEEN DAY Nachos (with popper or water) 2pm Aspirational Learning
← LEADERSHIP CAMP PARENT/TEACHER MEETINGS →					
<b>WEEK 11</b>	17 MARCH	18 MARCH	19 MARCH	20 MARCH 10am Easter Hat Parade 12pm Egg drop	21 MARCH LAST DAY OF TERM 1
← PARENT/TEACHER MEETINGS →					
<b>TERM 2 WEEK 1</b>	28 APRIL	29 APRIL	30 APRIL <b>TERM 2</b> FIRST DAY FOR STUDENTS	1 MAY	2 MAY 2pm Assembly
<b>WEEK 2</b>	5 MAY	6 MAY	7 MAY	8 MAY	9 MAY 2pm Aspirational Learning

**Gunnedah Public School P&C Fundraiser**

**COURTHOUSE HOTEL**

**MEAT RAFFLES**

PROCEEDS BENEFITING STUDENTS OF GUNNEDAH PUBLIC SCHOOL

FRIDAYS IN MARCH FROM 7 MARCH  
TWO SATURDAYS IN APRIL FROM 5 APRIL

IF YOU CAN HELP OUT FOR A COUPLE OF HOURS SELLING TICKETS, PLEASE CONTACT THE SCHOOL OR P&C MEMBERS

6742 2266  
6.30PM - 8.00PM

**Last Day of Term 1 -  
Friday, 11 April**

**First Day for students  
for Term 2 -  
Wednesday, 30 April**